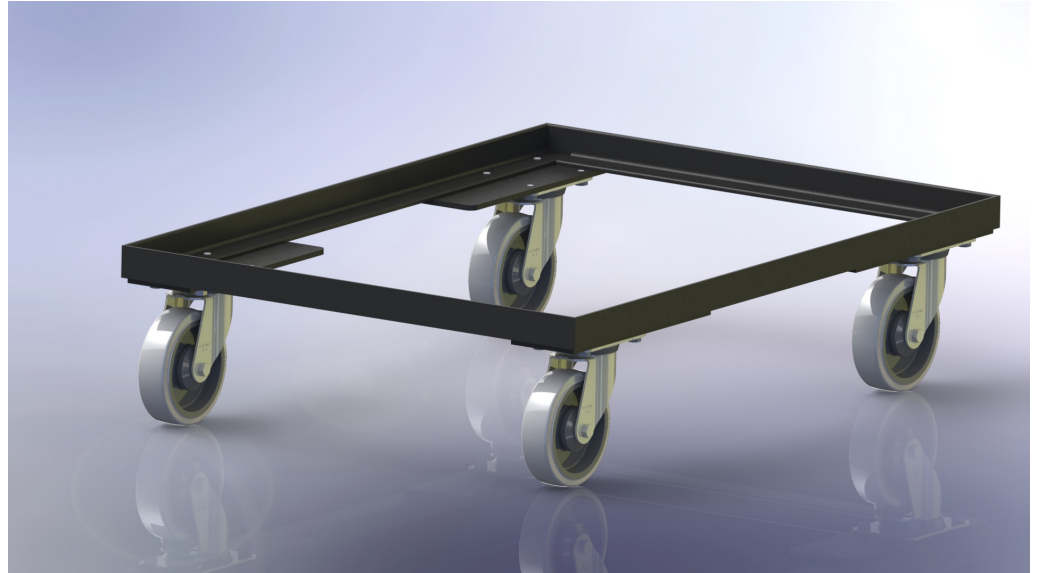




PETERSIME
INCUBATORS & HATCHERIES

Hatcher trolley HW067304

Compact trolley for hatcher baskets



Features & benefits

- ▶ Capacity of one stack of hatcher basket B03952 or B11125
- ▶ Capacity of two stacks of universal chick basket B14047
- ▶ Solid welding for frequent and rough handling
- ▶ Easy to maneuver with large wheels
- ▶ Suitable for industrial washing machines
- ▶ Symmetrical design for maximum flexibility

**WHEN[®]
CHICKS
COUNT**

Description

The HW067304 is Petersime's standard compact hatcher trolley. It has a recommended capacity of one stack of 16 chicken baskets B03952 or 14 turkey baskets B11125 or two stacks of 16 universal chick baskets B14047. This allows the loaded trolley to pass under a standard doorway.

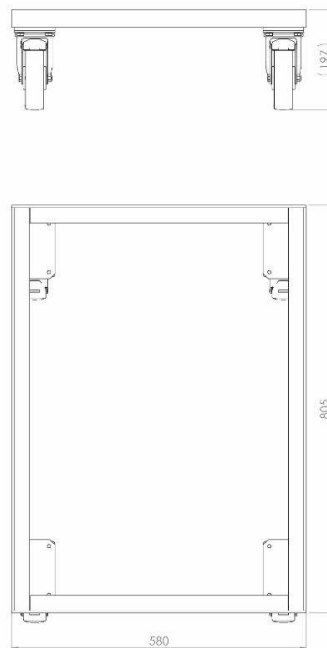
The trolley is welded solidly and has an extra coating that protects it from corrosion. This makes it perfectly suited for

frequent on-farm traying and transportation from farm to hatchery.

The trolley is mounted on four large swivel wheels with low roll resistance for easy maneuvering.

The HW067304 is suitable for industrial washing systems.

Specifications



Capacity

- ▶ 2,400 hatching chicken eggs (16 baskets of 150 eggs or 32 baskets of 75 eggs)
- ▶ 1,764 hatching turkey eggs (14 baskets of 126 eggs)
- ▶ 1,680 hatching turkey eggs (14 baskets of 120 eggs (60XL setter trays))

Dimensions

Length	805 mm
Width	580 mm
Height	197 mm

Material

- ▶ Welded steel frame with corrosion protective black colour coating