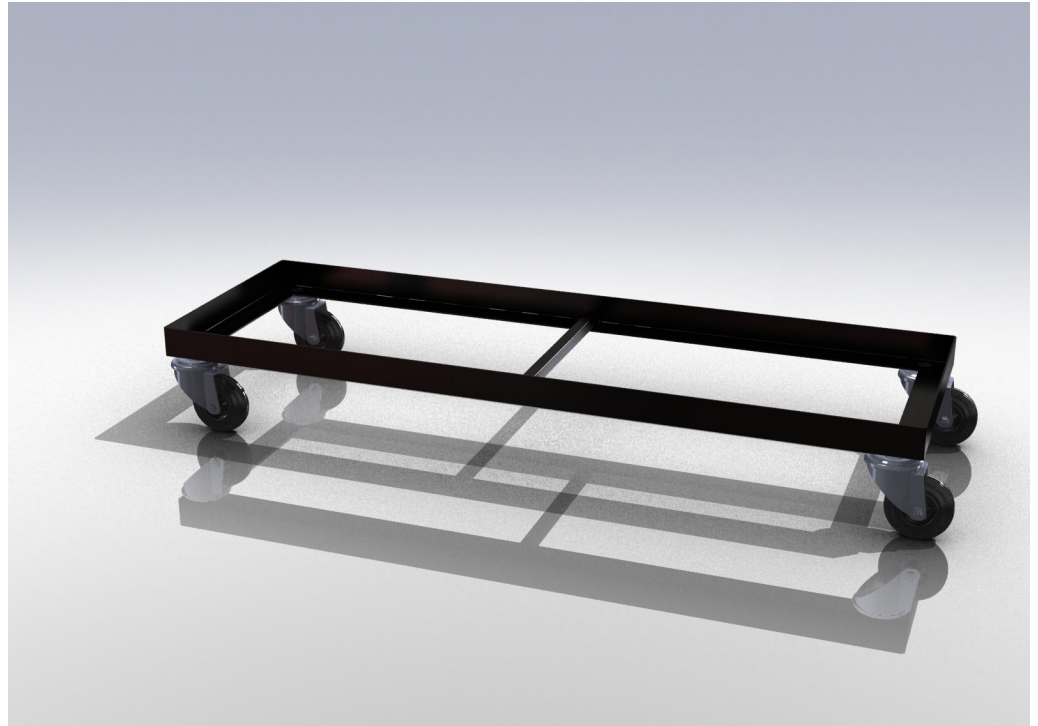




PETERSIME
INCUBATORS & HATCHERIES

Chick box trolley HW067129

Trolley for chick boxes



Features & benefits

- ▶ Designed for standard 40 cm x 60 cm chick boxes
- ▶ Capacity of two stacks of chick boxes
- ▶ Solid welding for frequent and rough handling
- ▶ Large wheels for easy maneuvering
- ▶ Suitable for industrial washing machines

WHEN[®]
CHICKS
COUNT

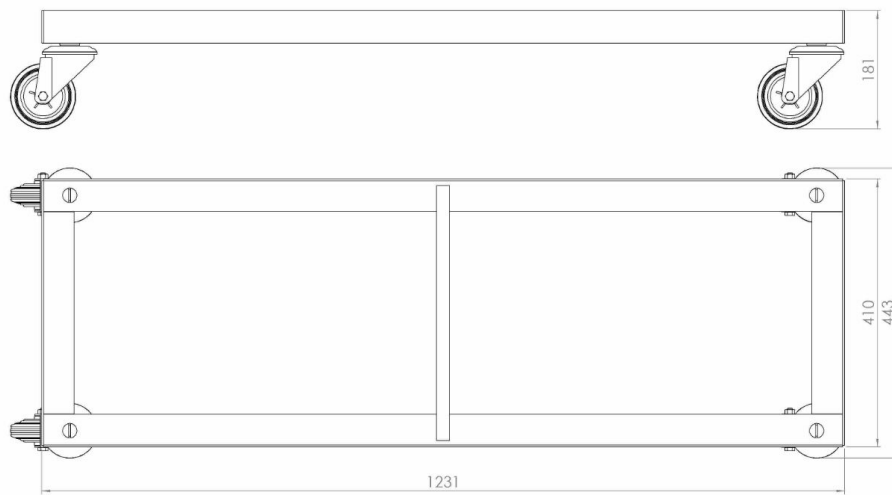
Description

The HW067129 is a universal trolley for standard chick boxes. It has a recommended maximum capacity of two stacks of 16 chicken boxes, which allows the loaded trolley to pass under a standard doorway.

The trolley is welded solidly and has an extra coating that protects it from corrosion. It is mounted on four large swivel wheels with low roll resistance for easy maneuvering.

The HW067129 is suitable for industrial washing systems.

Specifications



Capacity

- ▶ Two stacks of up to 16 chick boxes of 100 day-old chicks each

Dimensions

Length	1,231 mm
Width	443 mm
Height	181 mm

Material

- ▶ Welded steel frame with corrosion protective black colour coating